



H 003 AIR TANK BRACKET COMPLETE - 1612  
H 007 AIR TANK PATTI - 1612



H 004 AIR TANK BRACKET COMPLETE - SE  
H 008 AIR TANK PATTI - SE



H 001/ H 002/ H 005/ H 006/ H 009 AIR TANK



H 010/H011 ASSEMBLY SUPPORT COUPLING-1210/SE



H 0012 CABIN CROSSMEMBER



H 013 CABIN CROSSMEMBER COMPLETE



H 014 CABIN CROSSMEMBER SUPPORT



H 015 CENTRAL BEARING PLATE  
1510 (FRONT)



H 016 CENTRAL BEARING PLATE  
1510 (REAR)



H 017 CENTRAL BEARING PLATE  
1612 (ELONGATED HOLE)



H 018 CENTRAL BEARING PLATE  
1612 (ROUND HOLE)



H 019 CENTRAL BEARING PLATE-1613 /TC



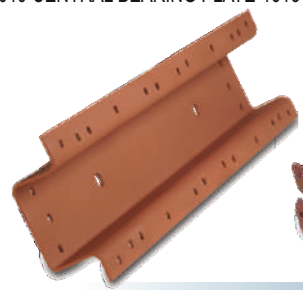
H 020 CENTRAL BEARING PLATE - 2515



H 021 CENTRAL BEARING PLATE - 2515EX



H 022 CENTRAL CROSSMEMBER  
2416/2515



H 023 CENTRAL CROSSMEMBER  
SE/1612



H 024 CENTRAL CROSSMEMBER  
COMPLETE - SE/1612



H 025 CENTRAL CROSSMEMBER  
SUPPORT - SE (LOWER)



H 026 CENTRAL CROSSMEMBER  
SUPPORT - SE (UPPER)



H 027 / H 075  
DIESEL TANK BRACKET COMPLETE SE / TC  
H 028 / H 076 DIESEL TANK PATTI-SE/TC



H 029 DUMPER BRACKET



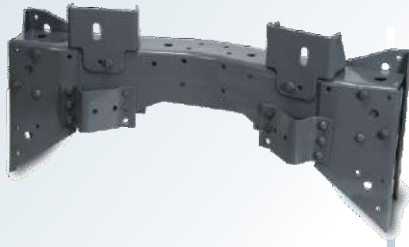
H 030 ENGINE CHASSIS SUPPORT - 1612



H 031 ENGINE CHASSIS  
SUPPORT - 2515 TC/EX



H 032 ENGINE CROSSMEMBER COMPLETE-1612



H 033 ENGINE CROSSMEMBER COMPLETE - SE



H 034 ENGINE CROSSMEMBER SUPPORT -1612



H 035 ENGINE CROSSMEMBER SUPPORT- SE (LOWER) LH & RH



H 036 ENGINE CROSSMEMBER SUPPORT- SE (UPPER) LH & RH



H 037 ENGINE MOUNTING BRACKET - SE



H 038 FRONT TOCHAN CROSSMEMBER - 1612



H 039 FRONT TOCHAN CROSSMEMBER COMPLETE - 1612



H 040 FRONT TOCHAN CROSSMEMBER SUPPORT - 1612



H 041 GEAR CHASSIS SUPPORT - 1612



H 042 GEAR CHASSIS SUPPORT - 2515 TC



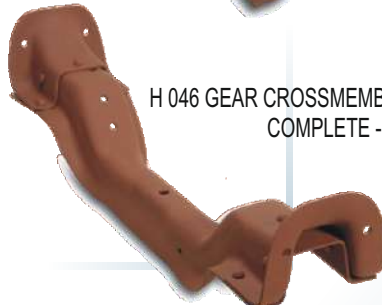
H 043 GEAR CROSSMEMBER COMPLETE - 1612



H 044 GEAR CROSSMEMBER COMPLETE - 2515 EX



H 045 GEAR CROSSMEMBER COMPLETE - 2515 TC



H 046 GEAR CROSSMEMBER COMPLETE - SE



H 047 GEAR CROSSMEMBER SUPPORT - 1612



H 048 GEAR CROSSMEMBER SUPPORT - 2515 EX



H 049 GEAR CROSSMEMBER SUPPORT - 2515 TC



H 050 / H 051 GEAR CROSSMEMBER SUPPORT - SE



H 052 / H 106 HANGER CROSSMEMBER 1612/2515 TC & 2213/2515 EX



H 053 HANGER CROSSMEMBER-SE





H 054 HANGER CROSSMEMBER COMPLETE - 1612



H 055 HANGER CROSSMEMBER COMPLETE - 2515 TC



H 056 HANGER CROSSMEMBER COMPLETE - SE



H 057 HANGER CROSSMEMBER SUPPORT - 1612



H 058 HANGER CROSSMEMBER SUPPORT - 2515 TC / EX



H 059 HANGER CROSSMEMBER SUPPORT - SE



H 060 / H 127 RADIATOR BRACKET SE & 1613 EURO I



~~H 061 STEERING CHASSIS BRACKET - SE~~



H 062 GEAR CROSSMEMBER PLATE - 2515 EX



H 063 GEAR CHASSIS SUPPORT - 1613 TURBO



H 064 GEAR CHASSIS SUPPORT - HYVA



H 065 ENGINE CHASSIS SUPPORT - 2213



H 066 HANGER CROSSMEMBER SUPPORT - 2515 EX (BOX)



H 067 GEAR CHASSIS SUPPORT - 1613 DUMPER



H 068 ENGINE CROSSMEMBER COMPLETE - 2515 TC



H 069 ENGINE CROSSMEMBER SUPPORT - 2515 TC



H 070 ENGINE CROSSMEMBER COMPLETE - 1613 TC



H 071 GEAR CROSSMEMBER COMPLETE - HYVA



H 072 ENGINE CROSSMEMBER SUPPORT - 1613 TC



H 073 GEAR CROSSMEMBER SUPPORT - HYVA



H 074 HANGER CROSSMEMBER COMPLETE - 2515 (BOX)



H 077 A / H 077 B GEAR CHASSIS SUPPORT - EURO II ( SET OF FOUR )





H 078 CENTRAL BEARING PLATE - 2213



H 079 CENTRAL BEARING PLATE - 2416



H 080 ENGINE CHASSIS SUPPORT - EURO II



H 081 GEAR CHASSIS SUPPORT - 1510/1613



H 082 / H 083 CENTRAL BEARING SUPPORT - 1612



H 084 GEAR CROSSMEMBER SUPPORT - EURO II



H 085 GEAR CROSSMEMBER COMPLETE EURO II



H 086 ENGINE CROSSMEMBER SUPPORT - EURO II



H 087 ENGINE CROSSMEMBER COMPLETE - EURO II



H 088 GEAR CHASSIS SUPPORT - 2213



H 089 GEAR CHASSIS SUPPORT-EURO II



H 090 / H 091 STEPNEY KHATIA - SE/TC



H 092 / H 093 STEPNEY COMPLETE SE/TC



H 094 / H 095 CABIN BRACKET 1612/ 2515



H 094A CABIN BRACKET CUP



H 096 GEAR CROSSMEMBER SUPPORT 2515 TC (WITH PATTI)



H 097 GEAR CROSSMEMBER COMPLETE 2515 TC (WITH PATTI)



H 098 CABIN BRACKET 3516 (STILL CABIN)



H 099 / H 115 CENTRAL BEARING PLATE 2518/4018



H 100 GEAR CHASSIS SUPPORT 2213 (WITH PLATE)



H 101 GEAR CHASSIS SUPPORT - 3516



H 102 FRONT TOCHAN CROSSMEMBER 2515



H 103 CABIN BRACKET 4010 (STILL CABIN)



H 104 ENGINE CHASSIS SUPPORT 2515 (6 HOLE)



H 105 CENTRAL BEARING PLATE EURO II



H 107 ENGINE CROSSMEMBER SUPPORT 1613 EURO I



H 108 ENGINE CROSSMEMBER COMPLETE - 1613 EURO I



H 109 ENGINE CROSSMEMBER SUPPORT - 4018



H 110 ENGINE CROSSMEMBER COMPLETE - 4018



H 111 GEAR CHASSIS SUPPORT HYVA (DOUBLE)



H 112 / H 112A CLUTCH HOUSING MOUNTING BRACKET - 2515 TC



H 113 CLUTCH HOUSING CHASSIS BRACKET - 2515/3118



H 114 CENTRAL BEARING PLATE 3118



H 114 A CENTRAL BEARING PLATE - 3118 NEW



H 116 GEAR CHASSIS SUPPORT - 4018



H 117 CABIN BRACKET 2515 (FRONT)



H 118 CENTRAL CROSSMEMBER - 3118



H 119 CABIN BRACKET 2515 / 3118 (REAR)



H 120 BACK LIGHT BRACKET SE / TC / LP



H121 CABIN BRACKET 3516 (REAR)



H 123 AIR TANK PATTI - 3118



H 125 REAR GUARD BUMPER BRACKET - LP



H 126 FRONT GUARD BUMPER BRACKET - LP



H 128 BUMPER BRACKET 3118



H 129 BUMPER BRACKET HYVA



H 130 CENTRAL CROSSMEMBER SUPPORT - 3118



H 131 CENTRAL CROSSMEMBER SUPPORT - 3118



H 132 CABIN BRACKET 3516 / 3118 (FRONT)



H 133 CABIN BRACKET 3118 (FRONT)



H 134 CABIN BRACKET - 3718



H 135 DIESEL TANK BRACKET PLATE - 3718





H 136 DIESEL TANK BRACKET - 3118



H 137 FRONT TOCHAN CROSSMEMBER - 4018



H 138 AIR TANK BRACKET (DOUBLE TANK) - 3118



H 139 FRONT GUARD BUMPERBRACKET - 3718



H 140 FRONT TOCHAN CROSSMEMBER SUPPORT - 4018



H 141 CABIN BRACKET 3118 (NEW) FRONT



H 142 CABIN BRACKET-4018 NEW



H 143 CENTRAL BEARING PLATE - 4225 BS VI



H 144 AIR TANK BRACKET - 3718 BS VI



H 145 CENTRAL BEARING PLATE (FIRST) - 4825 BS VI



H 146 CENTRAL BEARING PLATE (SECOND) - 4825 BS VI



H 147 ENGINE MOUNTING BRACKET - SIGNA



H 148 CLUTCH BUSTER BRACKET - 3718



H 149 CABIN BRACKET - 4018 SIGNA



H 150 CABIN BRACKET - 4923 PRIMA



H 151 AIR TANK - 4018 TRAILER



H 152 AIR TANK - 3118 TRAILER



H 153 AIR TANK-TRAILER



H 154 SPARE WHEEL CARRIER ASSEMBLY - SIGNA



H 154 A SPARE WHEEL BRACKET - SIGNA



H 155 FRONT TOCHAN CROSSMEMBER - 3718



H 156 AIR TANK BRACKET (3 TANK TRAILER)



H 157 CENTRAL BEARING PLATE - 4925 BS VI



H 158 CENTRAL BEARING PLATE -4830(NEW)1ST



H 159 CENTRAL BEARING PLATE -4830(NEW)2ND



H 160 CENTRAL BEARING PLATE -4925(NEW)



H 161 ENGINE MOUNTING BRACKET -BS IV



H 162 SPRING BRACKET





H 162A SPRING BRACKET





M 001 BUMPER BRACKET - 407 / 709



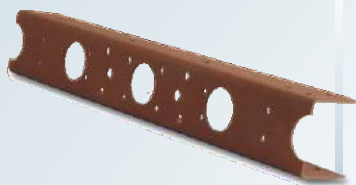
M 002 CABIN BRACKET - 407



M 003 CENTRAL BEARING PLATE  
1109



M 004 CENTRAL CROSSMEMBER - 407



M 005 / M 015 CENTRAL / HANGER  
CROSSMEMBER - 608



M 006 CENTRAL CROSSMEMBER  
COMPLETE - 608



M 007 / M 017 CENTRAL / HANGER  
CROSSMEMBER SUPPORT - 608 / 709



M 008 ENGINE CROSSMEMBER  
704 / 608 / 709



M 009 GEAR CHASSIS SUPPORT - 608



M 010 GEAR CHASSIS SUPPORT-709



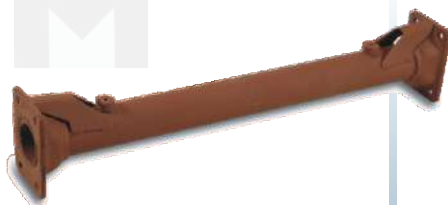
M 011 GEAR CROSSMEMBER - 709



M 012 GEAR CROSSMEMBER COMPLETE-407



M 013 GEAR CROSSMEMBER  
SUPPORT - 4C7



M 014 HANGER CROSSMEMBER - 407



M 016 HANGER CROSSMEMBER - 608



M 018 HANGER CROSSMEMBER  
SUPPORT (PIPE) - 407



M 019 RADIATOR BRACKET - 407



M 020 REAR CROSSMEMBER - 407



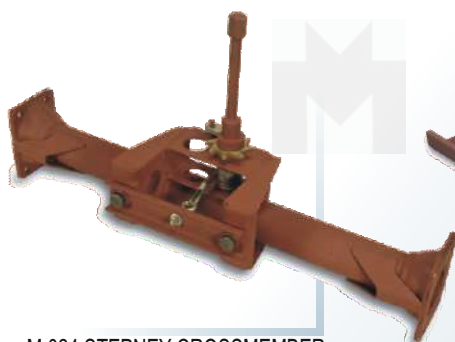
M 021 REAR HANGER - 407  
NEW MODEL



M 022 REAR HANGER - 407  
OLD MODEL



M 023 STEPNEY COMPLETE - 407



M 024 STEPNEY CROSSMEMBER  
COMPLETE - 407



M 025 STEPNEY KHATIA - 407



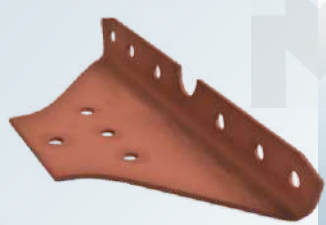
M 026 REAR HANGER - 407  
TURBO (FRONT)







M 027 REAR HANGER - 407  
TURBO (REAR)



M 028 HANGER CROSSMEMBER  
SUPPORT - 709



M 029 STEPNEY COMPLETE  
709



M 030 STEPNEY  
KHATIA - 709



M 031 / M 032 / M 039 ENGINE MOUNTING  
BRACKET - 407 / 709 /1109



M 033A GEAR CHASSIS SUPPORT - 1109 (BIG)



M 033B GEAR CHASSIS SUPPORT - 1109 (SMALL)



M 034 ENGINE CROSSMEMBER - 1109 (1ST CROSS)



M 035 ENGINE CROSSMEMBER - 1109 (2ND CROSS)  
(WITHOUT BRACKET)



M 036 ENGINE CROSSMEMBER  
1109 (3RD CROSS)



M 037 ENGINE CROSSMEMBER COMPLETE  
1109 (3RD CROSS)



M 038 ENGINE CROSSMEMBER  
SUPPORT - 1109 (3RD CROSS)



M 040 REAR HANGER - 407  
TURBO FRONT (DOUBLE PLATE)



M041 CABIN BRACKET  
LPT407 410



M 042 GEAR CHASSIS  
SUPPORT - 712 / 912



M 043 BACK LIGHT BRACKET  
407 / 709



M 044 CENTRAL CROSS MEMBER  
SUPPORT - 410 (UPPER)



M 045 CENTRAL CROSSMEMBER  
SUPPORT - 410 (LOWER)



M 046 HANGER CROSSMEMBER  
SUPPORT - 712



M 047 CENTRAL / HANGER  
CROSSMEMBER - 712



M 048 HANGER  
CROSSMEMBER COMPLETE - 712



M 049 CENTRAL  
CROSSMEMBER - 410



M 050 CENTRAL  
CROSSMEMBER COMPLETE - 410



M 051 CENTRAL  
CROSSMEMBER COMPLETE - 712



M 052 REAR  
CROSSMEMBER - 709





M 053 BUMPER BRACKET - 709



M 054 ACE ENGINE CROSSMEMBER



M 055 BUMPER BRACKET - 407  
(FOR FIBER BUMPER)



M 056 GEAR CHASSIS SUPPORT - 709 NEW

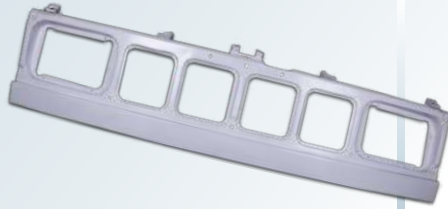


M 057 GEAR CROSSMEMBER  
(912 NEW)





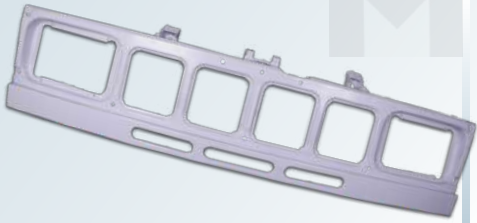
B 003 B 004 407 FRONT SIDE FENDER



B 006 407 FRONT METAL GRILL - COMPLETE



B 007 407 BUMPER



B 027 407 FRONT METAL GRILL COMPLETE - TURBO



B 072 407 TOP



B 073 407 SIDE FENDER



B 074 407 MUDGUARD INNER SHIELD



B 075 407 SMALL PATCH



B 076 407 BIG PATCH



B 077 407 GLASS PILLAR OUTER



B 078 407 GLASS PILLAR INNER



B 079 407 FOOT BOARD ASSEMBLY



B 080 407 WIPER PANNEL



B 081 407 TOP BOX ASSEMBLY



B 082 407 REAR WINDOW SUPPORT



B 083 407 REAR TOP GUTTER PATTI



B 084 407 SIDE TOP GUTTER PATTI



B 085 407 SIDE FENDER INNER



B 086 407 MUDGUARD PANJA



B 087 407 FOOT STEP



B 105 407 BONNET



B 033 ACE BUMPER (TYPE-1)



B 035 ACE FLOOR



B 036 ACE SHOW (SUPER)



B 037 ACE SIDE CORE (NO.1 CORNER) FULL



B 038 ACE SIDE CORE (NO.1 CORNER) HALF



B 039 ACE WIPER PANNEL



B 041 ACE SHOW (TYPE 1)



B 042 ACE BACK LIGHT PANNEL (OLD MODLE)



B 043 ACE SIDE CORE (MIDDLE PATTI)



B 051 ACE WHEEL ARCH (OUTER)



B 088 ACE FRONT SHOW HT (METAL)



B 089 ACE SIDE CORE ( NO 3 CORNER )



B 091 ACE TOP



B 093 ACE WHEEL ARCH (INNER)



B 106 ACE VENT CORNER



B 001 B 002 LP FRONT SHOW PANNEL



B 005 LP CENTRE PATTA



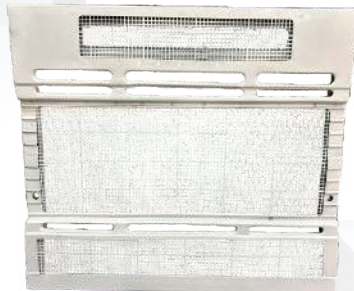
B 018 LP FRONT SHOW PANNEL ASSEMBLY



B 028 LP FRONT CENTRE GRILL ASSEMBLY



28 A LP FRONT CENTRE GRILL ASSEMBLY -3818



B 028 B LP FRONT CENTRE GRILL ASSEMBLY -3118



B023 B024 LP BUMPER (TWO FOUR BRACKET)



B025 B026 TC BUMPER



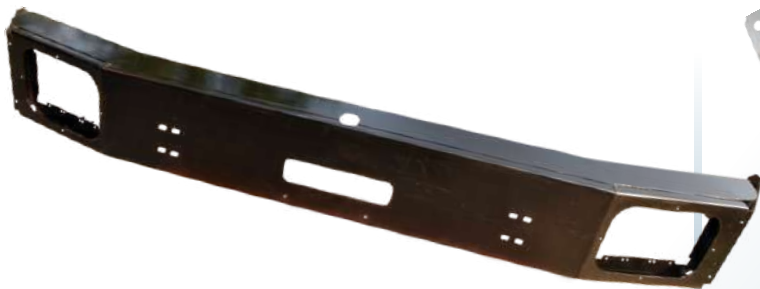
B 030 LP REAR GUARD BUMPER



B 031 LP FRONT GUARD BUMPER



B 060 TC BUMPER - 3118



B 060 A TC BUMPER - 3118 NEW



B 092 LP PADDLE BRACKET



B 096 TC BUMPER CORNER - 3118



B 032 LPT BUMPER - 709



B 034 LPT TOP - 709



B 040 LPT FRONT GRILL BRACKET



B 044 & B 044A LPT SMALL MUDGUARD (VENT CORNER)



B045 LPT SIDE CORE (GOLAI)



B046 LPT FOOT STEP



B 047 LPT FRONT METAL GRILL COMPLETE - 709



B 048 LPT BONNET - 709



B 049 LPT FOOT BOARD ASSEMBLY (MURGA) - 709



B 050 LPT FOOT BOARD (HALF PAYDAN) - 709



B 053 LPT MIRROR PATTI - 709



B 052 LPT FOOT BOARD INNER SHIELD - 709



B 054 LPT SIDE FENDER INNER CHANNEL - 709



B 058 LPT WATER CHANNEL - 709



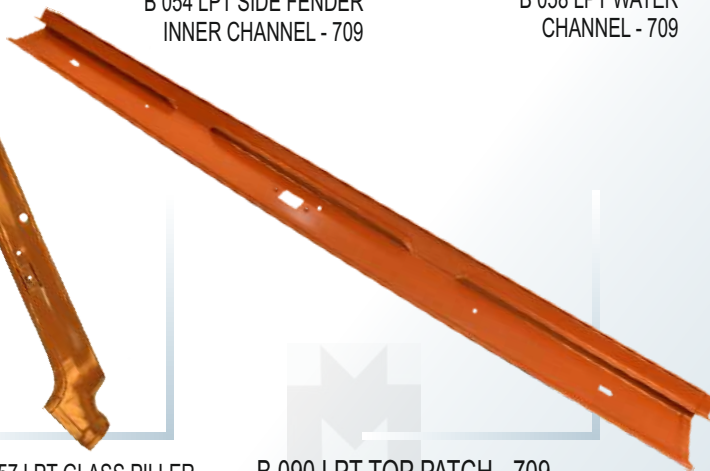
B 059 LPT HANDLE PATTI - 709



B 056 LPT GLASS PILLER OUTER - 709



B 057 LPT GLASS PILLER INNER - 709



B 090 LPT TOP PATCH - 709



B 055 LPT DOOR PILLER ASSEMBLY - 709

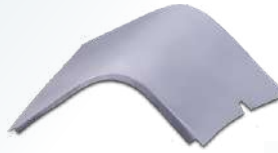




B 008 SE SIDE FENDER (GOLAI)



B 009 B 029 SE FRONT FENDER (MUDGUARD)



B 010 SE SMALL FENDER (V MUDGUARD)



B 011 SE BASE CHANNEL (NAV)



B 012 SE FRONT TYRE INNER CENTRE SHIELD



B 013 SE FOOT STEP



B 014 SE FOOT BOX INNER (FIVE LINE)



B 015 SE FOOT BOX SIDE (THREE LINE)



B 016 SE FRONT TYRE INNER REAR (FOUR LINE)



B 017 SE FRONT TYRE INNER FRONT (FOUR LINE)



B020 / B021 / B022 SE BUMPER  
B 019 SE BUMPER PLATE



B 095 SE FRONT FRAME (GRILL)



B 097 SE BONNET COMPLITE



B 061 HYVA FRONT SHOW PANNEL ASSEMBLY



B 062 HYVA BUMPER



B 063 HYVA GLASS PILLAR OUTER



B 064 HYVA GLASS PILLAR INNER



B 065 HYVA WIPPER PANNEL



B 066 HYVA WIPPER PANNEL INNER PLATE



B 067 HYVA METER PLATE



B 068 HYVA FOOT BOARD ASSEMBLY



B 069 HYVA FOOT STEP



B 070 HYVA SIDE FENDER



B 071 HYVA FOOT BOARD HALF



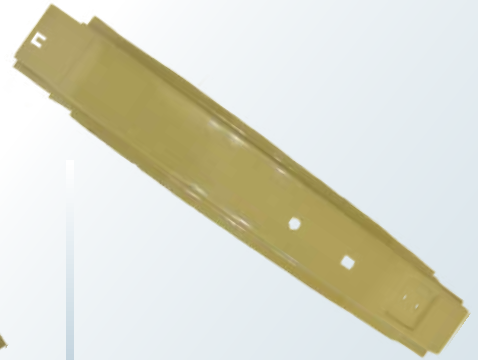
B 098 SIGNA FRONT SHOW PANNEL ASSEMBLY



B 099 SIGNA WIPER PANNEL



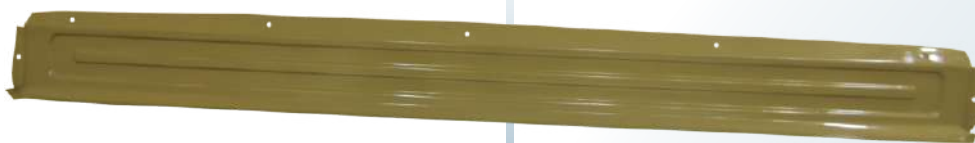
B 101 HYVA DOOR CHANNEL



B 102 HYVA FOOT STEP GOLAI



B 100 HYVA FRONT GRILL ASSEMBLY



B 103 HYVA DASH BOARD UPPER PATTI



B 104 HYVA TYRE PATRA ( 3 DHARI)







B 107 LPT WIPER PANNEL ASSEMBLY





F 8428114

LC 001 CENTER BEARING MOUNTING BRACKET (TYPE "C")



X 7178410

LC 002 CENTER BEARING MOUNTING BRACKET (TYPE "C")



F 8420010

LC 003 CENTER BEARING MOUNTING BRACKET (TYPE "C")



F 8035114

LC 004 CENTER BEARING MOUNTING BRACKET (TYPE "L")



B 0108001

LC 005 CAB MOUNTING BRACKET REAR - G45



FH 600115

LC 006 FUEL TANK STRAP



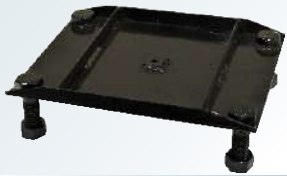
B0105206 RH/207 LH

LC 007 CAB MOUNTING BRACKET REAR



B0105205.204

LC 008 CABIN BRACKET - G45



LC 009 A SPARE WHEEL CARRIER BRACKET



B0909003

LC 009 SPARE WHEEL CARRIER ( COMPLETE )



X8903114

LC 010 AIR TANK BRACKET ( SMALL )



F1F00314

LC 011 AIR TANK BRACKET ( BIG )



LC 011A AIR TANK BRACKET ( BIG PLATE )



B0908101

LC 012 SPARE WHEEL CARRIER WITH 10 BOLTS ARRANGEMENT



LC 012 A SPARE WHEEL CARRIER BRACKET ( WITH 10 BOLTS ARRANGEMENT )



F1J00500.F1J01900

LC 013 AIR TANK 16" ( 15 LTS )



F1001200

LC 014 AIR TANK 28" ( 25 LTS )



B0104106(RH) B0104107(LH)

LC 015 CABIN BRACKET FRONT



FJ603000

LC 016 AIR TANK 10 ( 20 LTS )



F1J00600

LC 017 AIR TANK 16" ( 30 LTS )



LC 018 FUEL TANK BRACKET-TIPPER BS IV(BASE PAGE)



F1W03614

LC 019 CLUTCH BOOSTER MOUNTING BRACKET



F1P00114

LC 020 CENTER BEARING BRACKET



F1K01914RH/LH

LC 021 BUMPER BRACKET



B5204206RH / 207LH

LC 022 BUMPER BRACKET



F4Z39413RH / 513LH

LC 023 BUMPER BRACKET



F1K01513RH / 613LH

LC 024 BUMPER BRACKET



F4X00613RH / 713LH

LC 025 BUMPER BRACKET





F1K00913RH / 813LH

LC 026 BUMPER BRACKET



F5D09100

LC 027 CENTER BEARING BRACKET-1st



F5D09200

LC 028 CENTER BEARING BRACKET-2nd



LC 029 AIR CLEAR BRACKET STRAP



LH F8912410  
RH F8912510

LC 030 ENGINE MOUNTING BRACKET



F1J05800

LC 031 AIR TANK (WITH 2 BRACKETS)  
30 LTS





LB 001 CABIN MAIN CHANNEL



LB 002 SIDE PALLA



OC 001 AIR TANK- TRAILER BHARAT BENZ

