



H 003 AIR TANK BRACKET COMPLETE - 1612
H 007 AIR TANK PATTI - 1612



H 004 AIR TANK BRACKET COMPLETE - SE
H 008 AIR TANK PATTI - SE



H 001/ H 002/ H 005/ H 006/ H 009 AIR TANK



H 010/H011 ASSEMBLY SUPPORT COUPLING-1210/SE



H 0012 CABIN CROSSMEMBER



H 013 CABIN CROSSMEMBER COMPLETE



H 014 CABIN CROSSMEMBER SUPPORT



H 015 CENTRAL BEARING PLATE
1510 (FRONT)



H 016 CENTRAL BEARING PLATE
1510 (REAR)



H 017 CENTRAL BEARING PLATE
1612 (ELONGATED HOLE)



H 018 CENTRAL BEARING PLATE
1612 (ROUND HOLE)



H 019 CENTRAL BEARING PLATE-1613 /TC



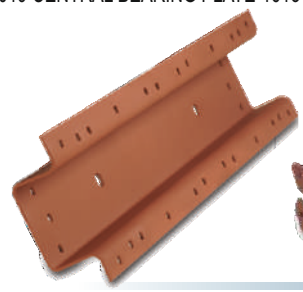
H 020 CENTRAL BEARING PLATE - 2515



H 021 CENTRAL BEARING PLATE - 2515EX



H 022 CENTRAL CROSSMEMBER
2416/2515



H 023 CENTRAL CROSSMEMBER
SE/1612



H 024 CENTRAL CROSSMEMBER
COMPLETE - SE/1612



H 025 CENTRAL CROSSMEMBER
SUPPORT - SE (LOWER)



H 026 CENTRAL CROSSMEMBER
SUPPORT - SE (UPPER)



H 027 / H 075
DIESEL TANK BRACKET COMPLETE SE / TC
H 028 / H 076 DIESEL TANK PATTI-SE/TC



H 029 DUMPER BRACKET



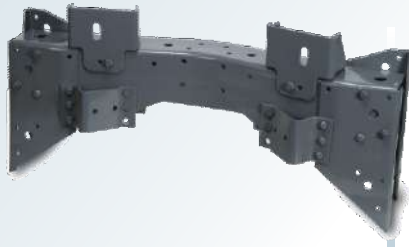
H 030 ENGINE CHASSIS SUPPORT - 1612



H 031 ENGINE CHASSIS
SUPPORT - 2515 TC/EX



H 032 ENGINE CROSSMEMBER COMPLETE-1612



H 033 ENGINE CROSSMEMBER COMPLETE - SE



H 034 ENGINE CROSSMEMBER SUPPORT -1612



H 035 ENGINE CROSSMEMBER SUPPORT- SE (LOWER) LH & RH



H 036 ENGINE CROSSMEMBER SUPPORT- SE (UPPER) LH & RH



H 037 ENGINE MOUNTING BRACKET - SE



H 038 FRONT TOCHAN CROSSMEMBER - 1612



H 039 FRONT TOCHAN CROSSMEMBER COMPLETE - 1612



H 040 FRONT TOCHAN CROSSMEMBER SUPPORT - 1612



H 041 GEAR CHASSIS SUPPORT - 1612



H 042 GEAR CHASSIS SUPPORT - 2515 TC



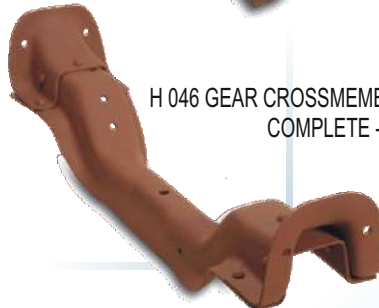
H 043 GEAR CROSSMEMBER COMPLETE - 1612



H 044 GEAR CROSSMEMBER COMPLETE - 2515 EX



H 045 GEAR CROSSMEMBER COMPLETE - 2515 TC



H 046 GEAR CROSSMEMBER COMPLETE - SE



H 047 GEAR CROSSMEMBER SUPPORT - 1612



H 048 GEAR CROSSMEMBER SUPPORT - 2515 EX



H 049 GEAR CROSSMEMBER SUPPORT - 2515 TC



H 050 / H 051 GEAR CROSSMEMBER SUPPORT - SE



H 052 / H 106 HANGER CROSSMEMBER 1612/2515 TC & 2213/2515 EX



H 053 HANGER CROSSMEMBER-SE





H 054 HANGER CROSSMEMBER COMPLETE - 1612



H 055 HANGER CROSSMEMBER COMPLETE - 2515 TC



H 056 HANGER CROSSMEMBER COMPLETE - SE



H 057 HANGER CROSSMEMBER SUPPORT - 1612



H 058 HANGER CROSSMEMBER SUPPORT - 2515 TC / EX



H 059 HANGER CROSSMEMBER SUPPORT - SE



H 060 / H 127 RADIATOR BRACKET SE & 1613 EURO I



~~H 061 STEERING CHASSIS BRACKET - SE~~



H 062 GEAR CROSSMEMBER PLATE - 2515 EX



H 063 GEAR CHASSIS SUPPORT - 1613 TURBO



H 064 GEAR CHASSIS SUPPORT - HYVA



H 065 ENGINE CHASSIS SUPPORT - 2213



H 066 HANGER CROSSMEMBER SUPPORT - 2515 EX (BOX)



H 067 GEAR CHASSIS SUPPORT - 1613 DUMPER



H 068 ENGINE CROSSMEMBER COMPLETE - 2515 TC



H 069 ENGINE CROSSMEMBER SUPPORT - 2515 TC



H 070 ENGINE CROSSMEMBER COMPLETE - 1613 TC



H 071 GEAR CROSSMEMBER COMPLETE - HYVA



H 072 ENGINE CROSSMEMBER SUPPORT - 1613 TC



H 073 GEAR CROSSMEMBER SUPPORT - HYVA



H 074 HANGER CROSSMEMBER COMPLETE - 2515 (BOX)



H 077 A / H 077 B GEAR CHASSIS SUPPORT - EURO II (SET OF FOUR)





H 078 CENTRAL BEARING PLATE - 2213



H 079 CENTRAL BEARING PLATE - 2416



H 080 ENGINE CHASSIS SUPPORT - EURO II



H 081 GEAR CHASSIS SUPPORT - 1510/1613



H 082 / H 083 CENTRAL BEARING SUPPORT - 1612



H 084 GEAR CROSSMEMBER SUPPORT - EURO II



H 085 GEAR CROSSMEMBER COMPLETE EURO II



H 086 ENGINE CROSSMEMBER SUPPORT - EURO II



H 087 ENGINE CROSSMEMBER COMPLETE - EURO II



H 088 GEAR CHASSIS SUPPORT - 2213



H 089 GEAR CHASSIS SUPPORT-EURO II



H 090 / H 091 STEPNEY KHATIA - SE/TC



H 092 / H 093 STEPNEY COMPLETE SE/TC



H 094 / H 095 CABIN BRACKET 1612/ 2515



H 094A CABIN BRACKET CUP



H 096 GEAR CROSSMEMBER SUPPORT 2515 TC (WITH PATTI)



H 097 GEAR CROSSMEMBER COMPLETE 2515 TC (WITH PATTI)



H 098 CABIN BRACKET 3516 (STILL CABIN)



H 099 / H 115 CENTRAL BEARING PLATE 2518/4018



H 100 GEAR CHASSIS SUPPORT 2213 (WITH PLATE)



H 101 GEAR CHASSIS SUPPORT - 3516



H 102 FRONT TOCHAN CROSSMEMBER 2515



H 103 CABIN BRACKET 4010 (STILL CABIN)



H 104 ENGINE CHASSIS SUPPORT 2515 (6 HOLE)



H 105 CENTRAL BEARING PLATE EURO II



H 107 ENGINE CROSSMEMBER SUPPORT 1613 EURO I



H 108 ENGINE CROSSMEMBER COMPLETE - 1613 EURO I



H 109 ENGINE CROSSMEMBER SUPPORT - 4018



H 110 ENGINE CROSSMEMBER COMPLETE - 4018



H 111 GEAR CHASSIS SUPPORT HYVA (DOUBLE)



H 112 / H 112A CLUTCH HOUSING MOUNTING BRACKET - 2515 TC



H 113 CLUTCH HOUSING CHASSIS BRACKET - 2515/3118



H 114 CENTRAL BEARING PLATE 3118



H 114 A CENTRAL BEARING PLATE - 3118 NEW



H 116 GEAR CHASSIS SUPPORT - 4018



H 117 CABIN BRACKET 2515 (FRONT)



H 118 CENTRAL CROSSMEMBER - 3118



H 119 CABIN BRACKET 2515 / 3118 (REAR)



H 120 BACK LIGHT BRACKET SE / TC / LP



H121 CABIN BRACKET 3516 (REAR)



H 123 AIR TANK PATTI - 3118



H 125 REAR GUARD BUMPER BRACKET - LP



H 126 FRONT GUARD BUMPER BRACKET - LP



H 128 BUMPER BRACKET 3118



H 129 BUMPER BRACKET HYVA



H 130 CENTRAL CROSSMEMBER SUPPORT - 3118



H 131 CENTRAL CROSSMEMBER SUPPORT - 3118



H 132 CABIN BRACKET 3516 / 3118 (FRONT)



H 133 CABIN BRACKET 3118 (FRONT)



H 134 CABIN BRACKET - 3718



H 135 DIESEL TANK BRACKET PLATE - 3718





H 136 DIESEL TANK BRACKET - 3118



H 137 FRONT TOCHAN CROSSMEMBER - 4018



H 138 AIR TANK BRACKET (DOUBLE TANK) - 3118



H 139 FRONT GUARD BUMPERBRACKET - 3718



H 140 FRONT TOCHAN CROSSMEMBER SUPPORT - 4018



H 141 CABIN BRACKET 3118 (NEW) FRONT



H 142 CABIN BRACKET-4018 NEW



H 143 CENTRAL BEARING PLATE - 4225 BS VI



H 144 AIR TANK BRACKET - 3718 BS VI



H 145 CENTRAL BEARING PLATE (FIRST) - 4825 BS VI



H 146 CENTRAL BEARING PLATE (SECOND) - 4825 BS VI



H 147 ENGINE MOUNTING BRACKET - SIGNA



H 148 CLUTCH BUSTER BRACKET - 3718



H 149 CABIN BRACKET - 4018 SIGNA



H 150 CABIN BRACKET - 4923 PRIMA



H 151 AIR TANK - 4018 TRAILER



H 152 AIR TANK - 3118 TRAILER



H 153 AIR TANK-TRAILER



H 154 SPARE WHEEL CARRIER ASSEMBLY - SIGNA



H 154 A SPARE WHEEL BRACKET - SIGNA



H 155 FRONT TOCHAN CROSSMEMBER - 3718



H 156 AIR TANK BRACKET (3 TANK TRAILER)



H 157 CENTRAL BEARING PLATE - 4925 BS VI



H 158 CENTRAL BEARING PLATE -4830(NEW)1ST



H 159 CENTRAL BEARING PLATE -4830(NEW)2ND



H 160 CENTRAL BEARING PLATE -4925(NEW)



H 161 ENGINE MOUNTING BRACKET -BS VI



H 162 SPRING BRACKET





H 162A SPRING BRACKET





M 001 BUMPER BRACKET - 407 / 709



M 002 CABIN BRACKET - 407



M 003 CENTRAL BEARING PLATE 1109



M 004 CENTRAL CROSSMEMBER - 407



M 005 / M 015 CENTRAL / HANGER CROSSMEMBER - 608



M 006 CENTRAL CROSSMEMBER COMPLETE - 608



M 007 / M 017 CENTRAL / HANGER CROSSMEMBER SUPPORT - 608 / 709



M 008 ENGINE CROSSMEMBER 704 / 608 / 709



M 009 GEAR CHASSIS SUPPORT - 608



M 010 GEAR CHASSIS SUPPORT-709



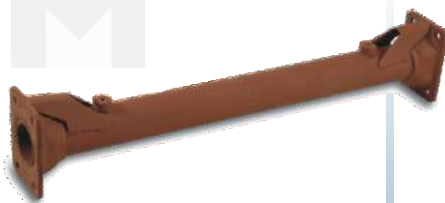
M 011 GEAR CROSSMEMBER - 709



M 012 GEAR CROSSMEMBER COMPLETE-407



M 013 GEAR CROSSMEMBER SUPPORT - 4C7



M 014 HANGER CROSSMEMBER - 407



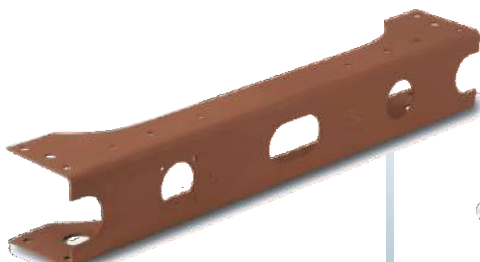
M 016 HANGER CROSSMEMBER - 608



M 018 HANGER CROSSMEMBER SUPPORT (PIPE) - 407



M 019 RADIATOR BRACKET - 407



M 020 REAR CROSSMEMBER - 407



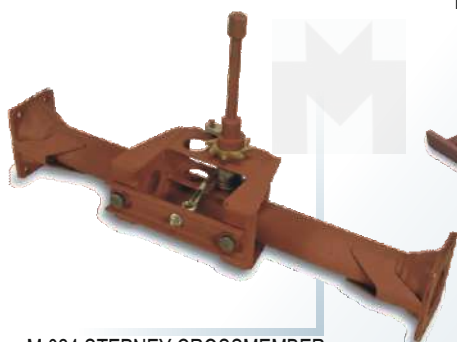
M 021 REAR HANGER - 407 NEW MODEL



M 022 REAR HANGER - 407 OLD MODEL



M 023 STEPNEY COMPLETE - 407



M 024 STEPNEY CROSSMEMBER COMPLETE - 407



M 025 STEPNEY KHATIA - 407

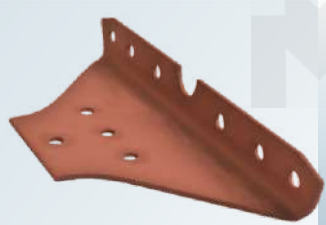


M 026 REAR HANGER - 407 TURBO (FRONT)





M 027 REAR HANGER - 407 TURBO (REAR)



M 028 HANGER CROSSMEMBER SUPPORT - 709



M 029 STEPNEY COMPLETE 709



M 030 STEPNEY KHATIA - 709



M 031 / M 032 / M 039 ENGINE MOUNTING BRACKET - 407 / 709 /1109



M 033A GEAR CHASSIS SUPPORT - 1109 (BIG)



M 033B GEAR CHASSIS SUPPORT - 1109 (SMALL)



M 034 ENGINE CROSSMEMBER - 1109 (1ST CROSS)



M 035 ENGINE CROSSMEMBER - 1109 (2ND CROSS) (WITHOUT BRACKET)



M 036 ENGINE CROSSMEMBER 1109 (3RD CROSS)



M 037 ENGINE CROSSMEMBER COMPLETE 1109 (3RD CROSS)



M 038 ENGINE CROSSMEMBER SUPPORT - 1109 (3RD CROSS)



M 040 REAR HANGER - 407 TURBO FRONT (DOUBLE PLATE)



M041 CABIN BRACKET LPT407 410



M 042 GEAR CHASSIS SUPPORT - 712 / 912



M 043 BACK LIGHT BRACKET 407 / 709



M 044 CENTRAL CROSS MEMBER SUPPORT - 410 (UPPER)



M 045 CENTRAL CROSSMEMBER SUPPORT - 410 (LOWER)



M 046 HANGER CROSSMEMBER SUPPORT - 712



M 047 CENTRAL / HANGER CROSSMEMBER - 712



M 048 HANGER CROSSMEMBER COMPLETE - 712



M 049 CENTRAL CROSSMEMBER - 410



M 050 CENTRAL CROSSMEMBER COMPLETE - 410



M 051 CENTRAL CROSSMEMBER COMPLETE - 712



M 052 REAR CROSSMEMBER - 709





M 053 BUMPER BRACKET - 709



M 054 ACE ENGINE CROSSMEMBER



M 055 BUMPER BRACKET - 407
(FOR FIBER BUMPER)



M 056 GEAR CHASSIS SUPPORT - 709 NEW

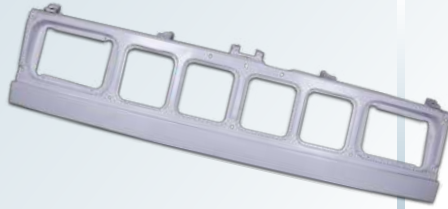


M 057 GEAR CROSSMEMBER
(912 NEW)





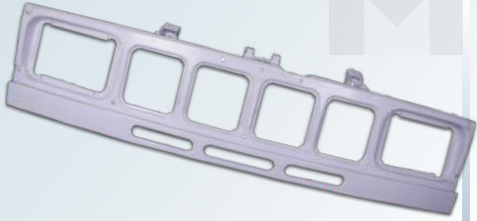
B 003 B 004 407 FRONT SIDE FENDER



B 006 407 FRONT METAL GRILL - COMPLETE



B 007 407 BUMPER



B 027 407 FRONT METAL GRILL COMPLETE - TURBO



B 072 407 TOP



B 073 407 SIDE FENDER



B 074 407 MUDGUARD INNER SHIELD



B 075 407 SMALL PATCH



B 076 407 BIG PATCH



B 077 407 GLASS PILLAR OUTER



B 078 407 GLASS PILLAR INNER



B 079 407 FOOT BOARD ASSEMBLY



B 080 407 WIPER PANNEL



B 081 407 TOP BOX ASSEMBLY



B 082 407 REAR WINDOW SUPPORT



B 083 407 REAR TOP GUTTER PATTI



B 084 407 SIDE TOP GUTTER PATTI



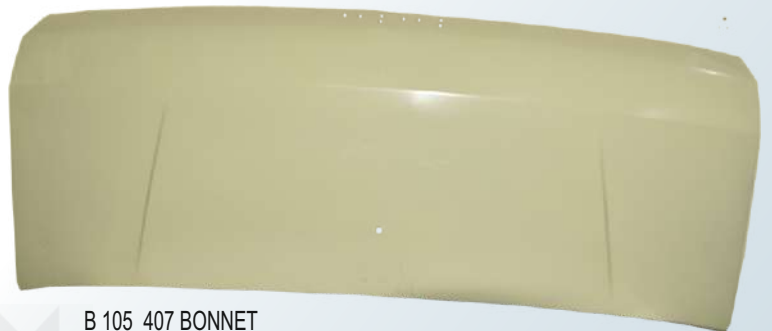
B 085 407 SIDE FENDER INNER



B 086 407 MUDGUARD PANJA



B 087 407 FOOT STEP



B 105 407 BONNET



B 033 ACE BUMPER (TYPE-1)



B 035 ACE FLOOR



B 036 ACE SHOW (SUPER)



B 037 ACE SIDE CORE (NO.1 CORNER) FULL



B 038 ACE SIDE CORE (NO.1 CORNER) HALF



B 039 ACE WIPER PANNEL



B 041 ACE SHOW (TYPE 1)



B 042 ACE BACK LIGHT PANNEL (OLD MODLE)



B 043 ACE SIDE CORE (MIDDLE PATTI)



B 051 ACE WHEEL ARCH (OUTER)



B 088 ACE FRONT SHOW HT (METAL)



B 089 ACE SIDE CORE (NO 3 CORNER)



B 091 ACE TOP



B 093 ACE WHEEL ARCH (INNER)



B 106 ACE VENT CORNER



B 001 B 002 LP FRONT SHOW PANNEL



B 005 LP CENTRE PATTA



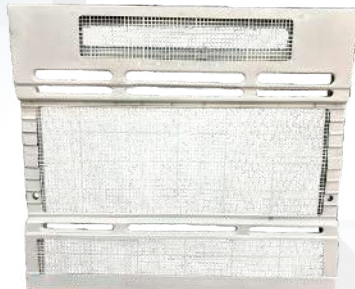
B 018 LP FRONT SHOW PANNEL ASSEMBLY



B 028 LP FRONT CENTRE GRILL ASSEMBLY



28 A LP FRONT CENTRE GRILL ASSEMBLY -3818



B 028 B LP FRONT CENTRE GRILL ASSEMBLY -3118



B023 B024 LP BUMPER (TWO FOUR BRACKET)



B025 B026 TC BUMPER



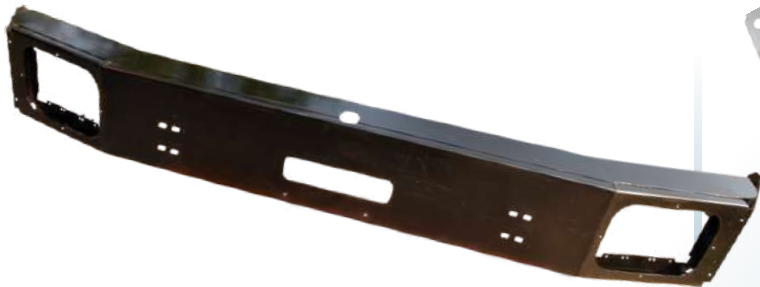
B 030 LP REAR GUARD BUMPER



B 031 LP FRONT GUARD BUMPER



B 060 TC BUMPER - 3118



B 060 A TC BUMPER - 3118 NEW



B 092 LP PADDLE BRACKET



B 096 TC BUMPER CORNER - 3118



B 032 LPT BUMPER - 709



B 034 LPT TOP - 709



B 040 LPT FRONT GRILL BRACKET



B 044 & B 044A LPT SMALL MUDGUARD (VENT CORNER)



B045 LPT SIDE CORE (GOLAI)



B046 LPT FOOT STEP



B 047 LPT FRONT METAL GRILL COMPLETE - 709



B 048 LPT BONNET - 709



B 049 LPT FOOT BOARD ASSEMBLY (MURGA) - 709



B 050 LPT FOOT BOARD (HALF PAYDAN) - 709



B 053 LPT MIRROR PATTI - 709



B 052 LPT FOOT BOARD INNER SHIELD - 709



B 054 LPT SIDE FENDER INNER CHANNEL - 709



B 058 LPT WATER CHANNEL - 709



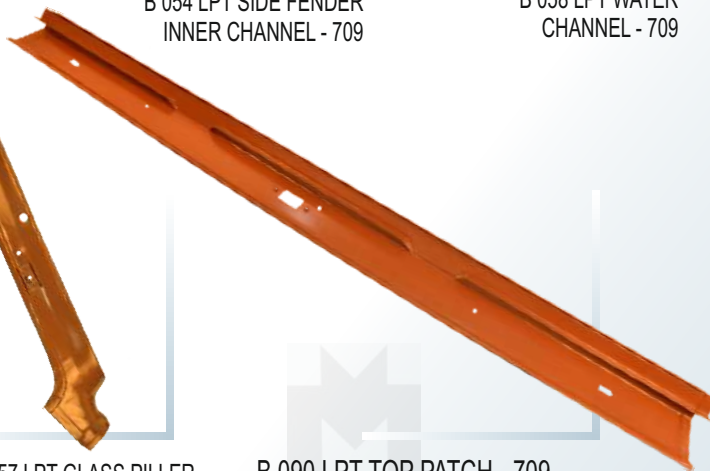
B 059 LPT HANDLE PATTI - 709



B 056 LPT GLASS PILLER OUTER - 709



B 057 LPT GLASS PILLER INNER - 709



B 090 LPT TOP PATCH - 709



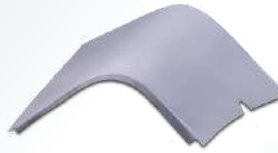
B 055 LPT DOOR PILLER ASSEMBLY - 709



B 008 SE SIDE FENDER (GOLAI)



B 009 B 029 SE FRONT FENDER (MUDGUARD)



B 010 SE SMALL FENDER (V MUDGUARD)



B 011 SE BASE CHANNEL (NAV)



B 012 SE FRONT TYRE INNER CENTRE SHIELD



B 013 SE FOOT STEP



B 014 SE FOOT BOX INNER (FIVE LINE)



B 015 SE FOOT BOX SIDE (THREE LINE)



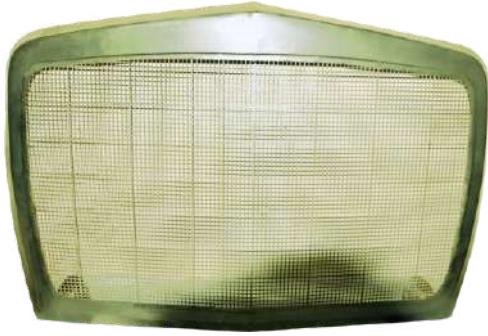
B 016 SE FRONT TYRE INNER REAR (FOUR LINE)



B 017 SE FRONT TYRE INNER FRONT (FOUR LINE)



B020 / B021 / B022 SE BUMPER
B 019 SE BUMPER PLATE



B 095 SE FRONT FRAME (GRILL)



B 097 SE BONNET COMPLITE



B 061 HYVA FRONT SHOW PANNEL ASSEMBLY



B 062 HYVA BUMPER



B 063 HYVA GLASS PILLAR OUTER

B 064 HYVA GLASS PILLAR INNER



B 065 HYVA WIPPER PANNEL



B 066 HYVA WIPPER PANNEL INNER PLATE



B 067 HYVA METER PLATE



B 068 HYVA FOOT BOARD ASSEMBLY



B 069 HYVA FOOT STEP



B 070 HYVA SIDE FENDER



B 071 HYVA FOOT BOARD HALF



B 098 SIGNA FRONT SHOW PANNEL ASSEMBLY



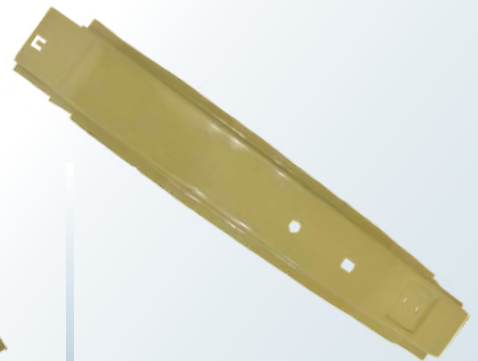
B 099 SIGNA WIPER PANNEL



B 100 HYVA FRONT GRILL ASSEMBLY



B 101 HYVA DOOR CHANNEL



B 102 HYVA FOOT STEP GOLAI



B 103 HYVA DASH BOARD UPPER PATTI



B 104 HYVA TYRE PATRA (3 DHARI)





B 107 LPT WIPER PANNEL ASSEMBLY





F 8428114

LC 001 CENTER BEARING MOUNTING BRACKET (TYPE "C")



X 7178410

LC 002 CENTER BEARING MOUNTING BRACKET (TYPE "C")



F 8420010

LC 003 CENTER BEARING MOUNTING BRACKET (TYPE "C")



F 8035114

LC 004 CENTER BEARING MOUNTING BRACKET (TYPE "L")



B 0108001

LC 005 CAB MOUNTING BRACKET REAR - G45



FH 600115

LC 006 FUEL TANK STRAP



B0105206 RH/207 LH

LC 007 CAB MOUNTING BRACKET REAR



B0105205.204

LC 008 CABIN BRACKET - G45



LC 009 A SPARE WHEEL CARRIER BRACKET



B0909003

LC 009 SPARE WHEEL CARRIER (COMPLETE)



X8903114

LC 010 AIR TANK BRACKET (SMALL)



F1F00314

LC 011 AIR TANK BRACKET (BIG)



B0908101

LC 012 SPARE WHEEL CARRIER WITH 10 BOLTS ARRANGEMENT



LC 012 A SPARE WHEEL CARRIER BRACKET (WITH 10 BOLTS ARRANGEMENT)



F1J00500.F1J01900

LC 013 AIR TANK 16" (15 LTS)



F1001200

LC 014 AIR TANK 28" (25 LTS)



B0104106(RH) B0104107(LH)

LC 015 CABIN BRACKET FRONT



FJ603000

LC 016 AIR TANK 10 (20 LTS)



F1J00600

LC 017 AIR TANK 16" (30 LTS)



LC 018 FUEL TANK BRACKET-TIPPER BS IV(BASE PAGE)



F1W03614

LC 019 CLUTCH BOOSTER MOUNTING BRACKET



F1P00114

LC 020 CENTER BEARING BRACKET



F1K01914RH/LH

LC 021 BUMPER BRACKET



B5204206RH / 207LH

LC 022 BUMPER BRACKET



F4Z39413RH / 513LH

LC 023 BUMPER BRACKET



F1K01513RH / 613LH

LC 024 BUMPER BRACKET



F4X00613RH / 713LH

LC 025 BUMPER BRACKET



F1K00913RH / 813LH

LC 026 BUMPER BRACKET





F5D09100

LC 027 CENTER BEARING BRACKET-1st



F5D09200

LC 028 CENTER BEARING BRACKET-2nd



LC 029 AIR CLEAR BRACKET STRAP



LH F8912410
RH F8912510

LC 030 ENGINE MOUNTING BRACKET





LB 001 CABIN MAIN CHANNEL



LB 002 SIDE PALLA



OC 001 AIR TANK- TRAILER BHARAT BENZ

